

Residential LFP Battery Series

CELL-X L5.12a

51.2V 100Ah 5.12kWh

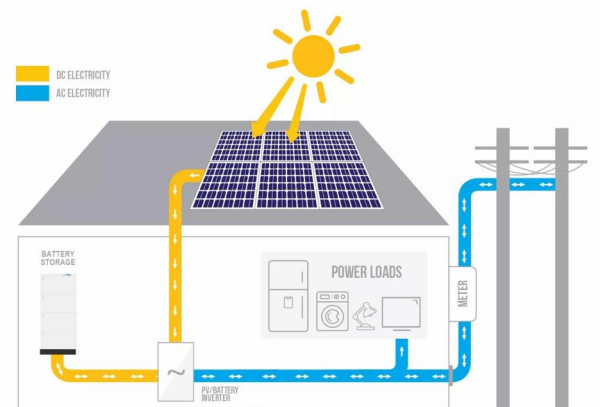
With its modular design, the Multi-functional Energy Storage System offers endless possibilities. Customize the system to meet your specific needs by removing energy storage units.



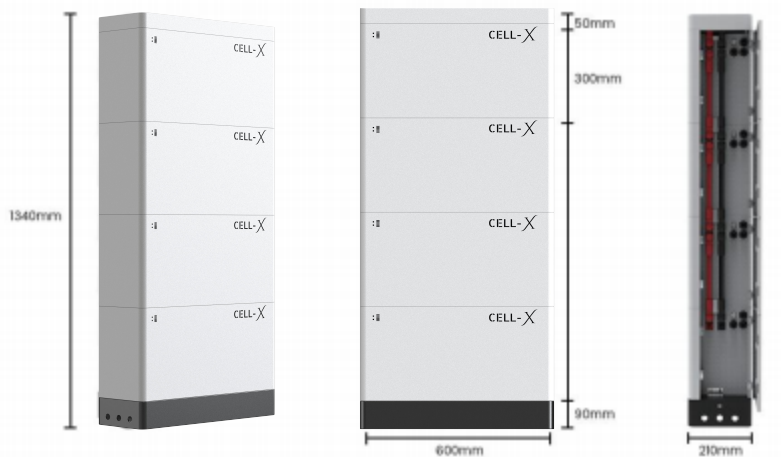
CELL-X L5.12a is a stackable energy storage battery, that can easily and seamlessly integrate with your home's existing solar panels and inverters to harness excess solar energy at night, and provide reliable emergency backup power when the power grid is interrupted to achieve 24-hour uninterrupted power consumption at home. Also, you can feed back extra electricity by connecting to the grid to earn money.

FEATURES

- »»» 51.2V Low voltage LiFePO4 battery module, Single module is 51.2V 100Ah 5.12kWh.
- »»» 1 to 6 layers recommended.
- »»» Can choose common 48V single or three phase 5KW, 8KW,10KW, 12KW off grid or hybrid on and off grid solar inverter.
- »»» Cobalt Free Lithium Iron Phosphate (LFP) Battery: Maximum Safety, Life Cycle and Power.
- »»» Capable of High-Powered Emergency-Backup and Off-Grid Function.
- »»» Self-Consumption Optimization for Residential and Commercial Applications.
- »»» Modular Design Simplifies Transport and Installation.



Dimensions



Technical Specification

CELL-X L5.12a

| Model | 51.2V100Ah | 51.2V200Ah | 51.2V300Ah | 51.2V400Ah | 51.2V500Ah | 51.2V600Ah |
|--|--|-------------|--------------|--------------|--------------|--------------|
| Number of layers | 1 layers | 2 layers | 3 layers | 4 layers | 5 layers | 6 layers |
| Picture | | | | | | |
| Energy | 5.12KWh | 10.24KWh | 15.36KWh | 20.48KWh | 25.6KWh | 30.72KWh |
| Dimension (L*W*H)mm | 600*210*440 | 600*210*740 | 600*210*1040 | 600*210*1340 | 600*210*1640 | 600*210*1940 |
| Weight(KG) | 56 | 104 | 152 | 200 | 248 | 296 |
| Operating Voltage Range | 43.2V~56.16V | | | | | |
| Recommend charge current | 50A | | | | | |
| MAX. continuous charge/discharge current | 100A | | | | | |
| Peak discharge current | 150A600ms | | | | | |
| LED Display | The information of Battery, such as SOC, battery working status. | | | | | |
| Communication | Support RS485 / CAN | | | | | |
| Operating temperature | -20°C~55°C | | | | | |
| Environment | Indoor | | | | | |
| Relative humidity | 5%~95% | | | | | |
| Cooling | Natural cooling | | | | | |
| Cell technology | Lithium-iron phosphate (LiFePO4) | | | | | |
| Life cycle | 6000 times @80%DOD | | | | | |
| Certificates | CB, IEC62619, UL1973, UL9540A, UKCA, CE-EMC, CE-GPSD, EN62619 ; UN38.3, MSDS | | | | | |

Single module Technical Specification

| | |
|-----------------------|----------------------|
| Module | 51.2V 100Ah, 5.12kWh |
| Dimension (L*W*H) | 600*210*300mm |
| Battery module weight | 48KG |